

Features:

- DC braking with one-way rectification
- integrated braking contactor
- integrated standstill detection
- monitoring of stopping time
- suitable for all asynchronous motors
- suitable for IE1, IE2 and IE3 motors
- self-optimizing braking
- CANopen on board
- degree of protection IP20
- pluggable push-in control terminals
- meets trad assoc. requirements for PL =c, acc. to EN13849-1:2008



Braking Devices
VB S [72 – 360A]



Function:

- parameterization via keypad or CAN-Bus
- potential-free control inputs and outputs
- motor temperature monitoring (PTC, KTY, PT1000)
- device protection
- tool speed monitoring (external speed sensor required)
- device fault relay (safety relevant)
- summary fault relay
- star-delta starting control

Typical Applications:

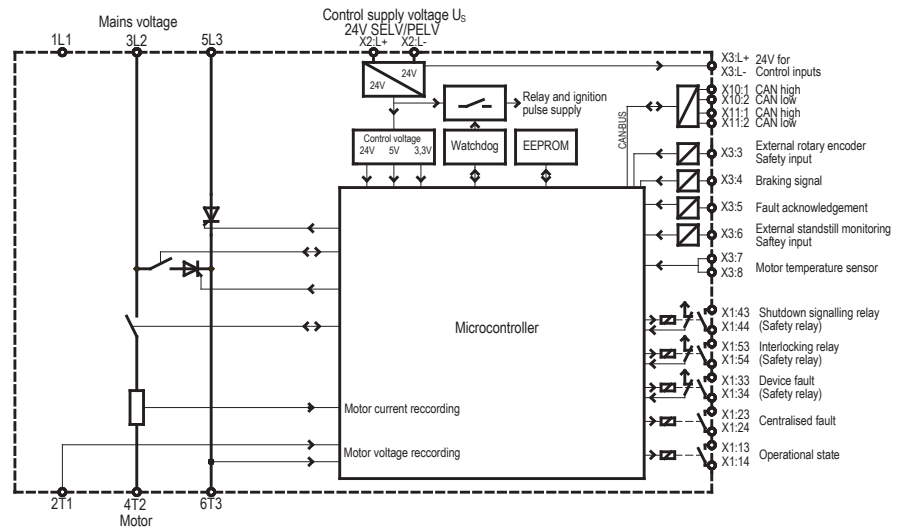
centrifuges
vibration sifters
wood working machines
grinding machines
mixer, et cetera

Option:

- wide-voltage-range 480 – 690VAC upon request

Accessory:

- adaptor for VB Safe 72A-360A for mounting onto DIN rail (order no. 29000.29700)

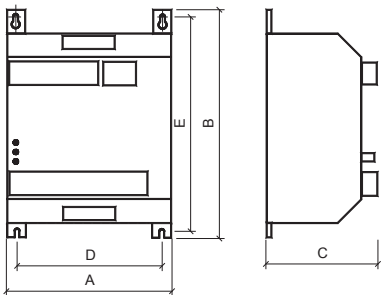


Typ designation	VB S 480/600-72	VB S 480/600-132	VB S 480/600-222	VB S 480/600-360
mains / motor voltage	VB S 480-...: 200...480V ±10% 50/60Hz			
acc. to DIN EN 50160 (IEC 38)	VB S 600-...: 400...600V ±10% 50/60Hz			
control supply voltage U _s	24VDC ± 10% / 0,5A			
order number 480V	2B500.48072	2B500.48132	2B500.48222	2B500.48360
order number 600V	2B500.60072	2B500.60132	2B500.60222	2B500.60360

3.02 **Braking Devices VersiBrake Safe [72 – 360A]**

Technical data	VB S 480/600-72	VB S 480/600-132	VB S 480/600-222	VB S 480/600-360
max. braking current I_e	72A	132A	222A	360A
rated operational voltage U_e	200...480VAC / 400...600VAC ±10% 50/60Hz			
control supply voltage U_s	24VDC ±10% / 0,5A			
recommended motor rating at U_e 400V – IE3 motors	7,5kW	15kW	25kW	45kW
recommended motor rating at U_e 400V – IE2 motors	15kW	30kW	55kW	90kW
switching cycle per hour at t_{br}=10s with I_e	50	30	17	18
utilization category	72A; AC-53b; 1-10; 62	132A; AC-53b; 1-10; 110	222A; AC-53b; 1-10; 202	360A; AC-53b; 1-10; 190
max. power dissipation				
- during operation at max. switching frequency, t _{br} =10s with I _e	22W	22W	22W	36W
- standby	6W	6W	6W	6W
I²t^(25s) (A²s) – length thyristor L₃ / free running thyristor	720 / 720	16200 / 4000	16200 / 4000	125000 / 51200
braking time	fixed braking time 0,25...25s or self-optimizing (Default)			
restart time	200ms			
control voltage U_c	24VDC ±10%			
input resistance control inputs	5kOhm			
contact rating of relay outputs	2A / 250VAC / 30VDC			
max. cross-sectional area for connection solid/flexible				
- control terminals	1,5mm ²			1,5mm ²
- power terminals / length of stripping or wire ferrule	1,5...16mm ² / 18mm			6...35mm ² / 15mm
drive connection screw				P22
functional safety: DIN EN 61508 / DIN EN 13849	SIL 1 / PL c			
ambient / storage temperature	-15°C ... 45°C up to an altitude of 1000m / -25°C ... 75°C			
size	1	1	1	2
weight / kg	1,35	1,45	1,45	3,6

Dimensions:



size	A (mm)	B (mm)	C (mm)	D (mm)	E (mm)
1	103	230	138	86	220
2	205	230	160	183	220

Connection Diagram:

